



**Clean Oil  
Services Pty. Ltd.**  
TRADING AS OIL SOLUTIONS N.O.

**YOUR PARTNER IN FLUID MANAGEMENT**

## **OS 060 CENTRIFUGE**

### **FEATURES:**

- 0.6 kg dirt holding capacity
- Approx 10 lpm flow
- Suitable for 10 to 90 litre sumps
- Washable rotor
- Fully machined rotor
- Driven by oil pressure
- Removes particles to sub-micron
- Extend oil life
- Increase machine life

### **APPLICATIONS INCLUDE:**

- Medium Diesel Engines
- Hydraulic Systems
- Small Filter Carts
- Small to medium gearboxes
- Turbines
- Compressors

### **FOR MORE INFO...**

CONTACT OUR APPLICATIONS ENGINEERS FOR ADVICE ON THE BROAD RANGE OF APPLICATIONS FOR THIS AND OTHER UNITS.



**Clean Oil  
Services Pty. Ltd.**

472 Woolcock Street, Garbutt 4814  
Queensland Australia

Phone | +61 7 4728 7777

Fax | +61 7 4728 7799

E-mail | [sales@cleanoilservices.com](mailto:sales@cleanoilservices.com)

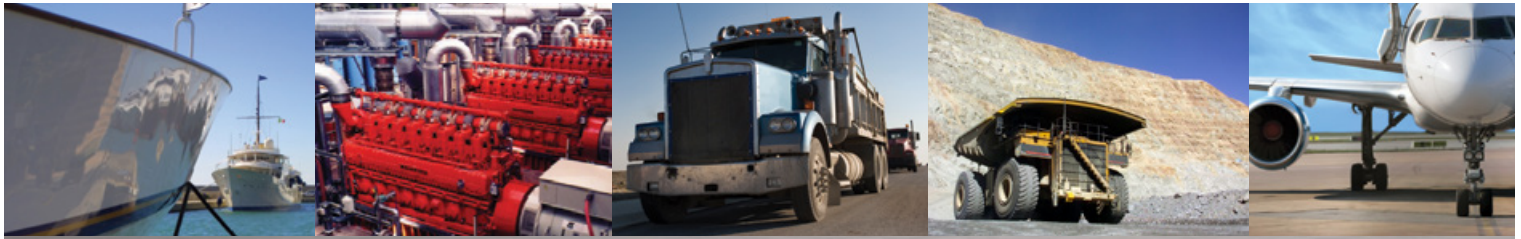
[www.cleanoilservices.com](http://www.cleanoilservices.com) • [www.lubemaster.com.au](http://www.lubemaster.com.au)



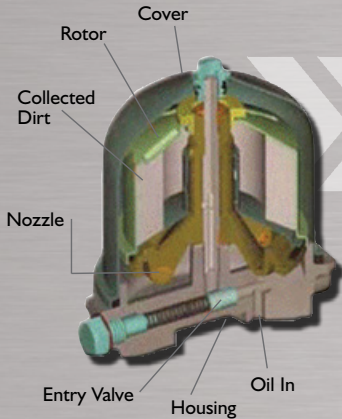
### **SAVE ON OIL COSTS AND DOWNTIME**

- The OS 060 is designed to fit medium sized diesel engines such as Cummins, Mack, Detroit, Caterpillar and others in the medium engine size range accommodating sump capacities from 20 to 90 litre
- **KEEP YOUR OIL CLEAN WITHOUT REPLACEMENT ELEMENTS**
- **REDUCE OIL CHANGES AND DISPOSAL**
- **EXTEND OIL AND MACHINE LIFE**





# for trucks, boats, mining gear, turbines hydraulic systems, gearboxes & more!

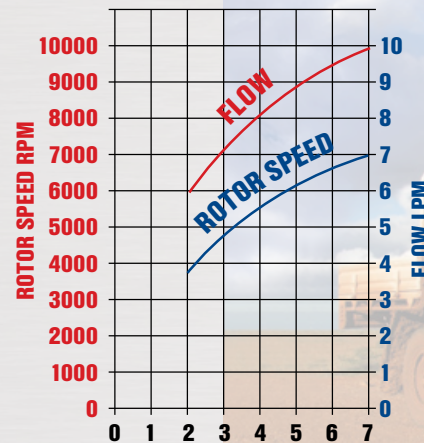


## the centrifuge myth explained...

- Centrifuge filtration works on density, not pore size. Consequently a higher level of cleanliness can be maintained than with other fluid filtration systems. The more dense contamination particles are removed and contained in the rotor without affecting additive levels..... Additives are not effected unless they separate on standing.
- The centrifuge is capable of rotor speeds approaching 7000 rpm. Any contaminants with a higher density than the oil will be slung to the outside of the rotor where they are trapped for removal when the rotor is cleaned.

- Centrifuge range includes units sized from 5 lpm to 80 lpm and can be adapted to suit all diesel engines from the 4 cylinder 4WD's to giant generator diesels.
- Our engineers can advise you on the best model to suit your application.
- With the introduction of Exhaust Gas Recirculation, now compulsory in the US and currently being introduced in Australia, the demands on engine oil's performance has been considerably increased. Rather than rely on the oil to carry the particulate contamination, why not remove it from the system altogether and keep your oil clean and free to do what it is meant to do - lubricate and reduce wear.

## performance curves



YOUR LOCAL DEALER >>>

### OUR RANGE OF FLUID MANAGEMENT SERVICES INCLUDE:

- COMPREHENSIVE USED OIL AND WEAR DEBRIS ANALYSIS
- INFRA-RED THERMOGRAPHY
- LUBRICATION CONSULTANCY AND MANAGEMENT SERVICES
- CUSTOM DESIGNED AND SPECIALISED FILTRATION
- HYDRAULIC HOSE, FITTINGS & PUMP SUPPLIES
- LUBRICANT SUPPLIES

